

i_SCALE

www.holbright.com

HB-DCP SERIES



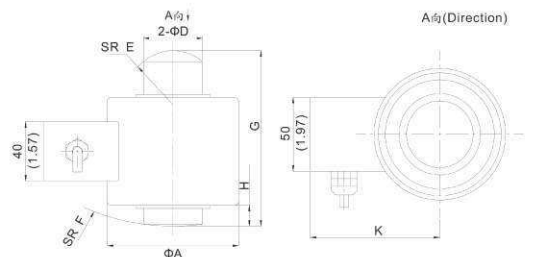
技术指标

Specifications

精度等级 Accuracy Class According To OIML R60	OIML R60	C3	量程 Capacities	t	0.5, 1, 2, 3, 5, 10, 20, 25, 30, 40, 50
最大检定分度数 n max	n max	3000	额定输出 Rated Output	Counts	800,000/2mV/V 1,200,000/3mV/V
最小检定分度值 Vmin	Vmin	E _{max} /7500	测量速率 Measuring Rate	Hz	256
综合误差 Combined Error	%F.S	≅ ± 0.020	输出速率 Output Rate	Hz	64
蠕变 Creep Error	%F.S/30min	≅ ± 0.016	通讯介面 Asynchronies Interface		CAN Bus
温度对输出灵敏度的影响 Temperature Effect On Sensitivity	%F.S/10ϕ	≅ ± 0.011	通讯串行传输速率 Communication Baud Rate	Bps	50K, 125K, 250K
温度对零点输出的影响 Temperature Effect On Zero Output	%F.S/10ϕ	≅ ± 0.019	最大通讯距离 Maximum Communication Distance	m	50K/750m, 125K/250m, 250K/100m
补偿温度范围 Compensation Temperature Range	°C	-10~+40	防护等级 Protection Class		IP68
使用温度范围 Operating Temperature Range	°C	-30~+80	安全过载范围 Safe Load Limit	%F.S	150
极限过载范围 Ultimate Load	%F.S	300	电缆线长度 Length Of Cable	m	15/10~50t 5/0.5~5t

外型尺寸

Outline Dimension in mm(inch)



尺寸mm (inch)	ΦA	ΦD	E	F	G	H	K
0.5-5t	88.9(3.50)	40(1.57)	25(0.98)	150(5.90)	118.5(4.67)	19(0.75)	87.5(3.44)
10-30t	88.9(3.50)	40(1.57)	37.5(1.48)	150(5.90)	118.5(4.67)	14(0.55)	87.5(3.44)
40-50t	88.9(3.50)	50(1.97)	200(7.87)	200(7.87)	118.5(4.67)	14(0.55)	87.5(3.44)
100 t	120(4.72)	76(3.00)	50(1.97)	300(11.81)	150(5.90)	24(0.94)	102(4.02)

接线方式 Connections

红 (Red) V+ ,
 黑 (Black) V- ,
 白 (White) CANL ,
 蓝 (Blue) CANL ,
 黄 (Yellow) CANH ,
 棕 (Brown) CANH ,
 透明 (Transparent) Shield