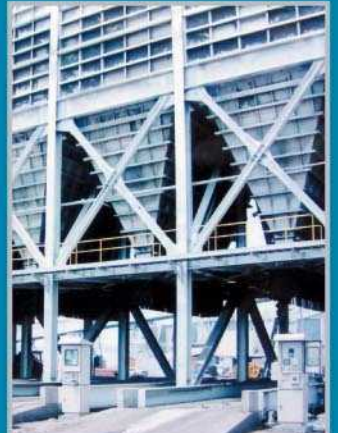
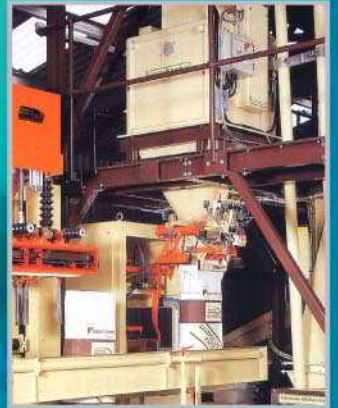


HB-DSB Series Single Shear Beam Digital Load Cell

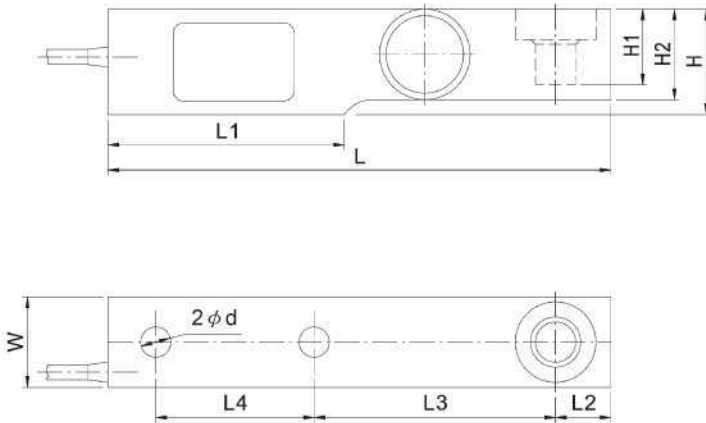


Feature

- Capacity: 0.5t~25t
- High Accuracy can meet OIML C1, C3 Grade
- Digital Output Via Can_Bus
- Hermetically sealed, IP68
- Internal Self-Diagnostics
- Self-aligning, Stainless Steel Single Column
- It is provided with Dual Surge Protection (Lighting Protection)
- Calibration Without Test Weight
- Auto compensated temperature

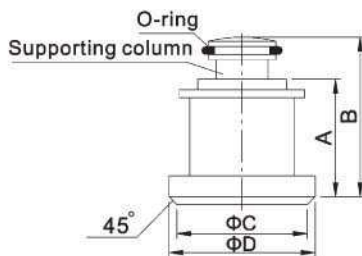


Physical Dimension mm(inch)



Mounting Assembly Kits Physical Dimension

(HB-MT105-MS/SS)



Dim. (mm)	D	B	A	C
0.5-3	35(1.38)	44.9(1.77)	24.9(0.98)	32(1.36)
5	42(1.65)	56.7(2.23)	34.7(1.37)	40(1.57)
10, 15	57(2.24)	80.7(3.18)	66.7(2.63)	53(2.09)
20, 25	70(2.76)	85(3.35)	67(2.64)	64(2.52)

Dim. (mm)	L	L1	L2	L3	L4	H1	H2	H	W	d
0.5, 2	203	95	22	98	64	30	37	43	37	13
2.5	203	95	22	98	64	30	37	43	37	15
3	203	95	22	98	64	25	37	43	37	15
5	235	110	22	124	66	30	48	52	48	21
10, 15	279	133	32	140	82	20	60	67	60	28
20, 25	318	153	38	159	89	24	70	82.5	70	34