

HB-DDB Double Beam Digital Load Cell

The HB-DDB is designed for Road and Rail Weighbridges and Silo, Tank Scale's application; its Capacity is from 20t~50t, the Accuracy can completely meet OIML C1 and C3 Grade.

Each Digital Load Cell can be composed independently in any type, quantities' Weighing System and offer Without Test Weight Calibration, Automatic Corner Correction, Automatic Full Span Linear Adjustment, the Automatic Detection of L/C's breakdown or wrong signal. After the replacement of Load Cell, the user only needs to enter the parameter instead of wasting time in recalibrating.

The HB-DDB can be connected with HB-8260 Digital Weighing Indicator by easier and faster installation.

The HB-DDB is a Double Beam Load Cell with a Digital Output. The welded Construction and built-in Surge Protection ensure that this product can be used successfully in harsh environment.

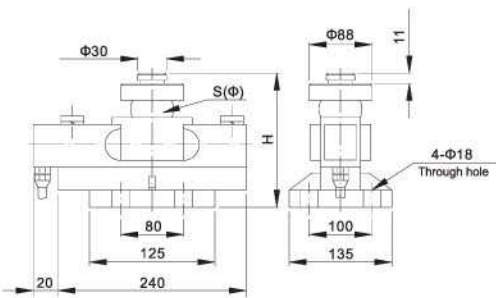


Digital Load Cell

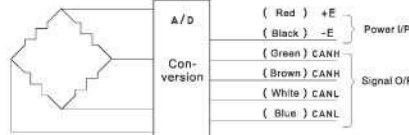
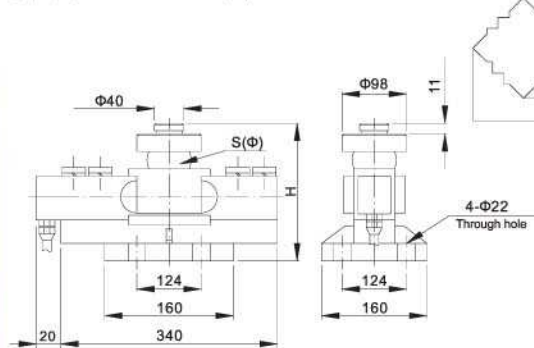
Special Features

- Capacity: 10, 20, 25, 30, 40, 50t
- High Accuracy can meet OIML C1, C3 Grade
- Digital Output Via Can_bus
- Hermetically sealed, IP68
- Internal Self-Diagnostics
- Self-aligning, mounting assembly
- It is provided with Dual Surge Protection (Lighting Protection)
- Calibration without Test Weight
- Auto compensated temperature

Physical Dimension



Capacity(t)	10t	20t~30t 40tSE	50t
Dimension(mm)			
H	195	225	267
SΦ	50	76	82



Wiring:

- Shielded, 4 conductor cable: ϕ 5.5mm
- Standard cable length: 12m
- Cable type and cable length for customer's own application are available on request

i_SCALE

